

A light blue world map is centered on the page, overlaid with several curved, parallel blue lines that sweep across the map from left to right. The text is centered over this graphic.

PROJECT REDSTART

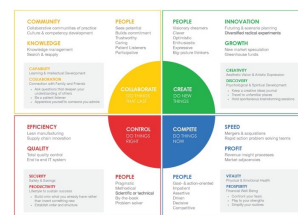
DASHBOARD GUIDE

28 SEPTEMBER 2023

| | | |
|------------------|------------------|---------------|
| PROJECT REDSTART | | |
| 230928 | PROJECT REDSTART | SUMMARY GUIDE |



- The **Competing Values Framework (CVF)** is a **business framework** to better understand organizations
- The Competing Values Framework (CVF) is a framework used to **assess individual traits, organizational cultures, and contextual factors**
- **CVF describes four main archetypes:**
 - **Collaborate** – Community, cohesion and mentorship
 - **Creative** – Externally focused, flexible and diverse
 - **Compete** – Goal achievement, profitability and share
 - **Control** – Control, order and efficient process
- Organizational project features can be **fit/mapped to** the quadrants
 - Sense/code factors
 - Design metrics



Project Redstart is a tool that indexes key information mapped to the CVF to facilitate exploration, research, and project definition

- Using only unclassified sources, metrics were chosen to span each of the four quadrants
- Redstart enables inquiry into specific elements of the relationships between a focal power (in this case, China or the USA) and a target country through the lens of the CVF (“Top-Down” view)
- Redstart enables inquiry into key strengths and limitations of the innovation capability and activity of a target country (“Bottom-up” view)
- The tool enables exploration of relationships, capabilities and other dynamics to complement traditional approaches and serve as a starting point to deeper inquiry

Bi-Lateral “Top-Down” View (Pardee Center Report)

- Reflects specific, directional relationship between:
 - ❖ USA and focal country
 - ❖ China and focal country

- **Collaborate Quadrant:**
 - Political Bandwidth (Level of diplomatic representation, Shared intergovernmental activity, etc.)
- **Create Quadrant:**
 - Economic Bandwidth (Goods trade and trade agreements)
- **Control Quadrant:**
 - Economic Dependence (Trade % of total trade and GDP)
- **Compete Quadrant:**
 - Security Dependence (Arms import stock % of total stock and % of military spending)

[FBIC REPORT LINK](#)



Building the Formal Bilateral Influence Capacity Index

The index is a composite of 10 indicators that measure the capacity of a country to influence another country through formal bilateral mechanisms. The indicators are: 1. Political Stability, 2. International Patents, 3. Regulatory Environment, 4. High Tech Exports, 5. Trade % of GDP, 6. Trade Agreements, 7. Diplomatic Representation, 8. Arms Imports, 9. Military Spending, 10. Innovation and Novel Activity.

| Country | Score |
|-------------|-------|
| USA | 100 |
| China | 85 |
| India | 70 |
| Japan | 60 |
| Germany | 50 |
| France | 40 |
| UK | 30 |
| Canada | 20 |
| South Korea | 10 |
| Italy | 5 |
| Spain | 0 |

Global Innovation Index 2022 What is the future of innovation-driven growth?



China


| Indicator | Score |
|-------------------------------|-------|
| Political Stability | 95 |
| International Patents | 80 |
| Regulatory Environment | 70 |
| High Tech Exports | 60 |
| Trade % of GDP | 50 |
| Trade Agreements | 40 |
| Diplomatic Representation | 30 |
| Arms Imports | 20 |
| Military Spending | 10 |
| Innovation and Novel Activity | 5 |

Country-specific “Bottom-Up” View (WIPO GII Report)

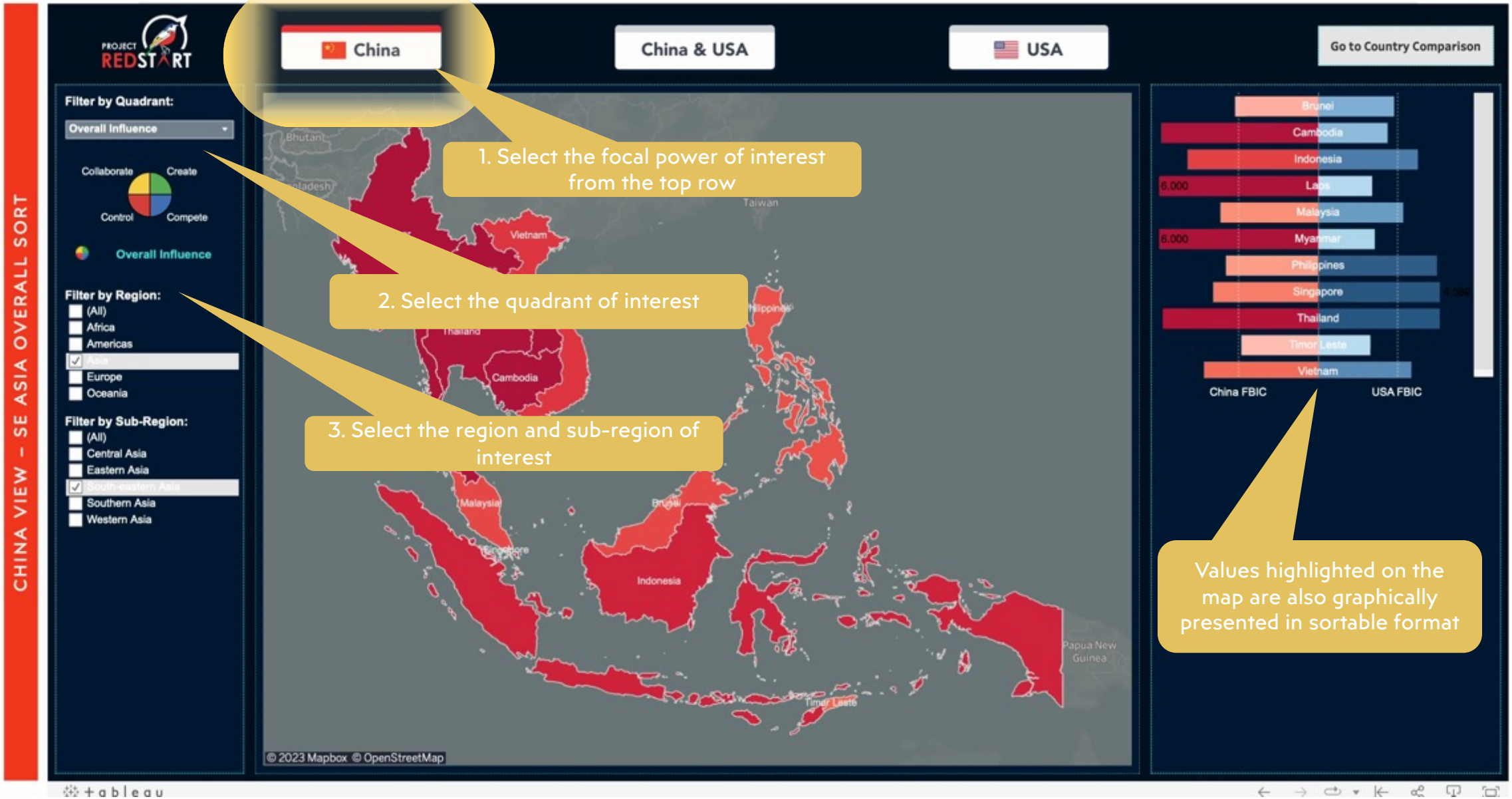
- Reflects detailed, innovation-related aspects of each (covered) individual country:

- **Collaborate Quadrant:**
 - Political Stability
- **Create Quadrant:**
 - International Patents
- **Control Quadrant:**
 - Regulatory Environment
- **Compete Quadrant:**
 - High Tech Exports

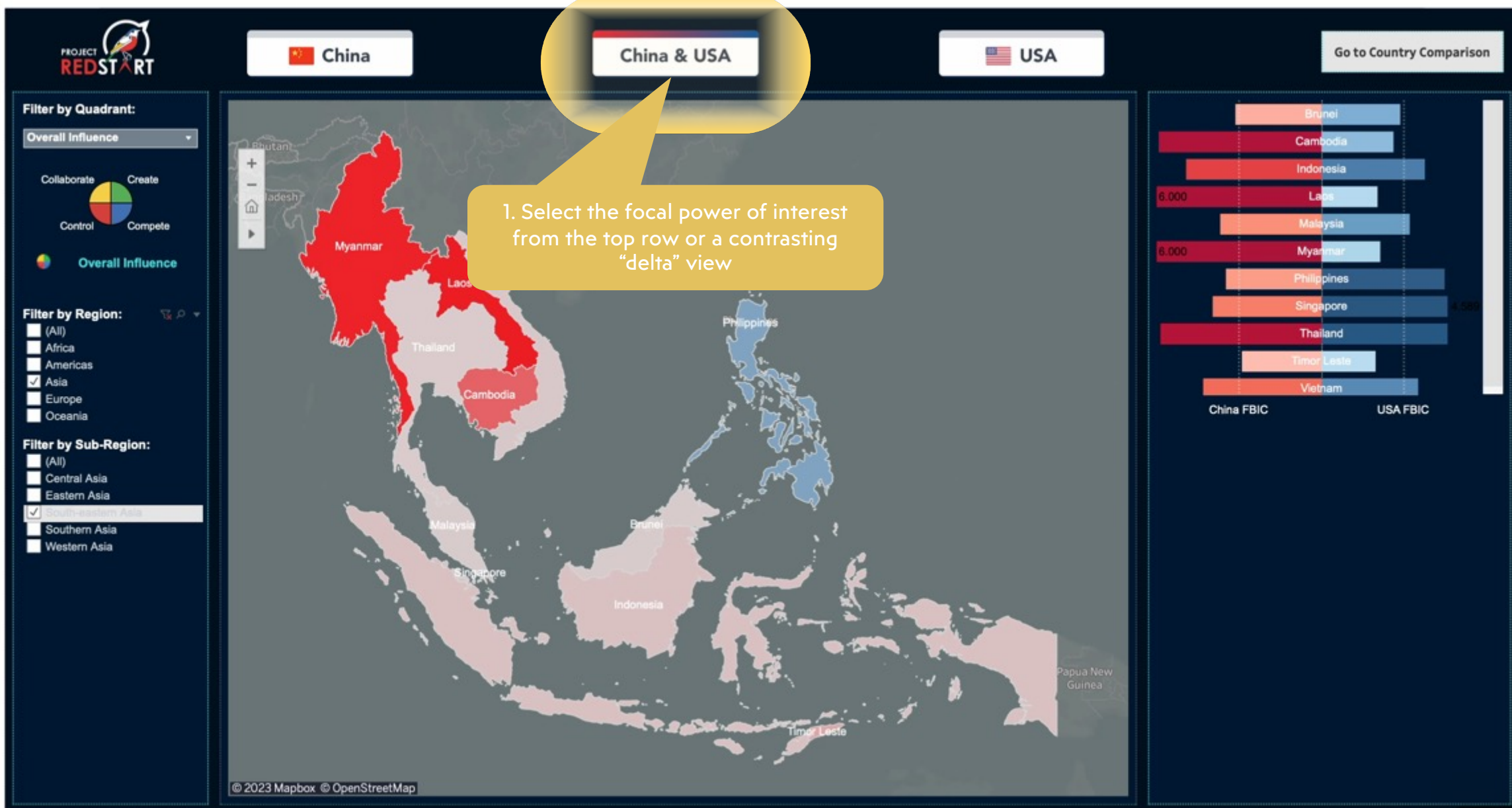
[GII REPORT LINK](#)

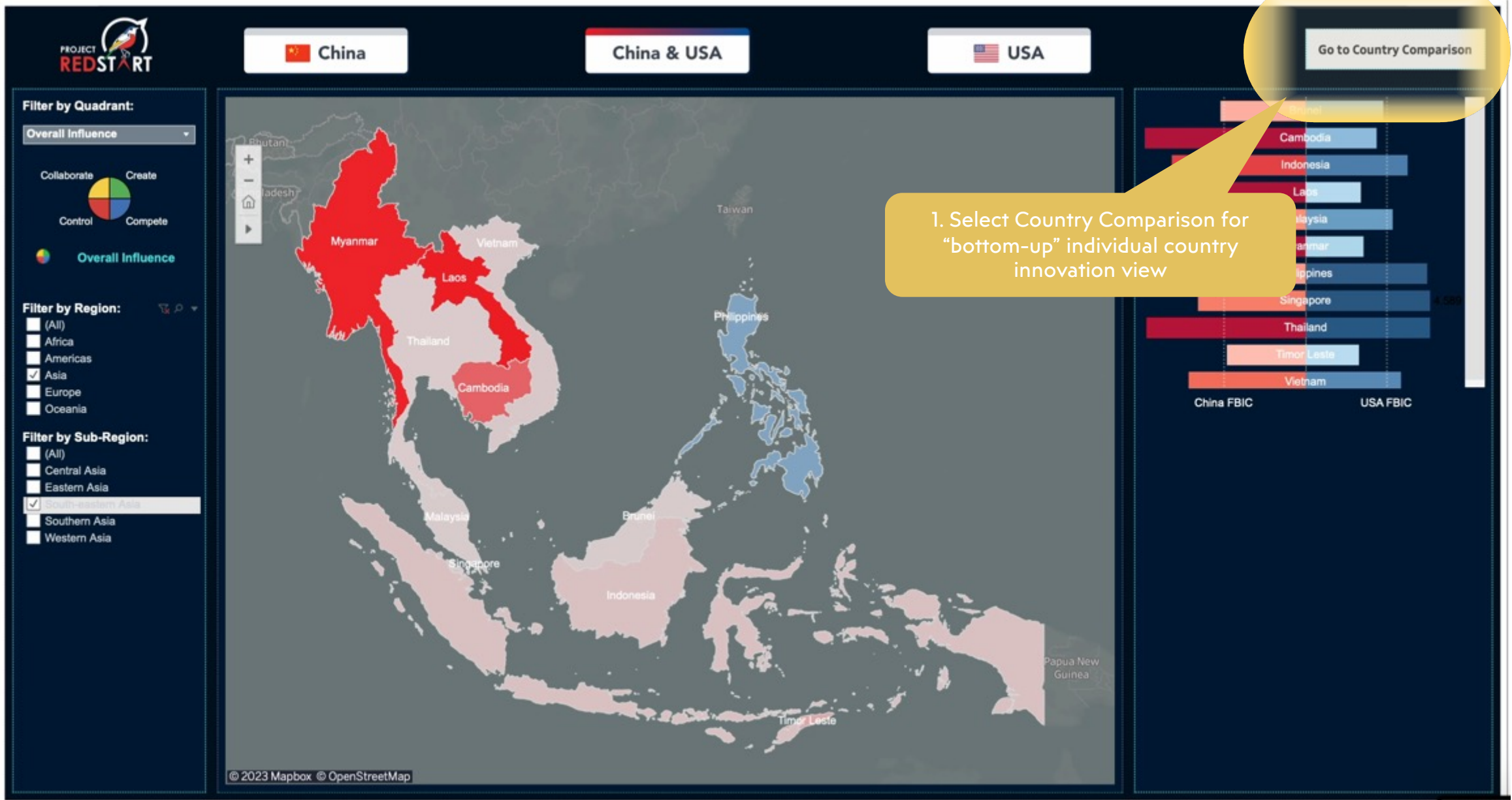
A light blue world map is centered on the slide, overlaid with several wavy, parallel lines that sweep across the map from left to right. The text 'PROJECT REDSTART' and 'DASHBOARD' is centered over the map.

PROJECT REDSTART DASHBOARD

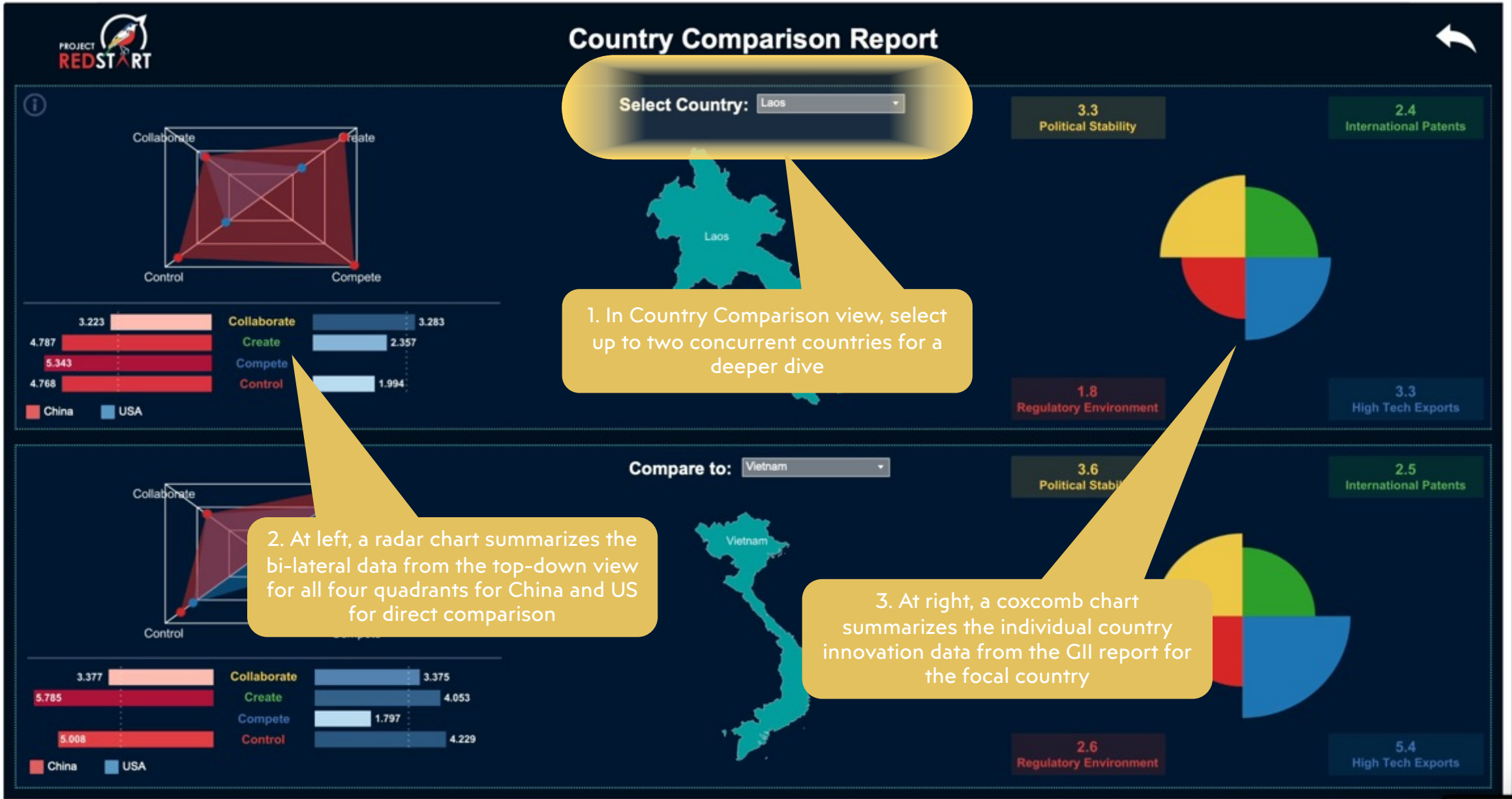


DELTA VIEW 4Q WW





1. Select Country Comparison for "bottom-up" individual country innovation view



1. In Country Comparison view, select up to two concurrent countries for a deeper dive

2. At left, a radar chart summarizes the bi-lateral data from the top-down view for all four quadrants for China and US for direct comparison

3. At right, a coxcomb chart summarizes the individual country innovation data from the GII report for the focal country

A light blue world map is centered in the background. Overlaid on the map are several thin, curved blue lines that sweep across the page from left to right, creating a sense of motion and connectivity.

PROJECT REDSTART

DASHBOARD GUIDE

28 SEPTEMBER 2023